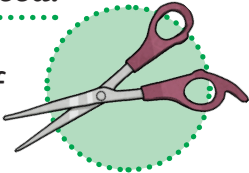


Instructions for Christmas Box Baubles

Follow these simple instructions to make your own cube-shaped Christmas box bauble. Why not fill it with Christmas treats or a toy for a friend as a surprise?

You will need:

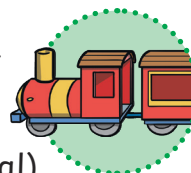
a pair of scissors



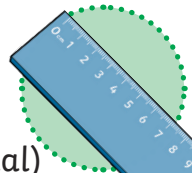
glue



a small toy or treat (optional)

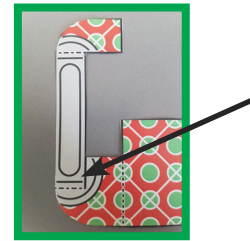


a ruler (optional)



Instructions:

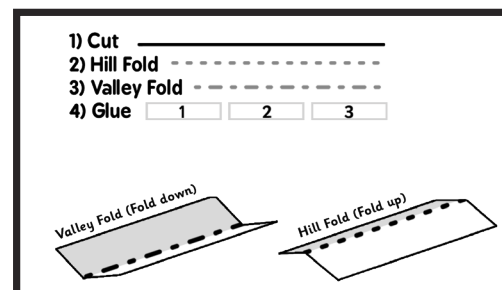
1. First, cut out the template along all the solid black lines. Be sure to cut the line that makes the handle (see picture).
2. Now, fold all of the dotted lines to help you make your cube shape before gluing.



All the dotted lines fold down (a hill fold). The two 'dotted and dashed' lines on the handle fold up (a valley fold).

Use a ruler to help you keep a straight edge.

Follow this diagram:



How to Make the Cubes:

3. Start to glue; join the faces of the cube together by adding glue first to tab 1, followed by tabs 2, 3 and finally 4. Each time you add glue, hold the tab to the face next to it until it has dried.

Top Tip: If you want to hide a small toy or Christmas treat inside the box, drop it in now!

4. Next, fold down the top face of the cube. Making sure the handle is untucked first, add glue to shapes 5 and 6 and attach the two tabs on top.

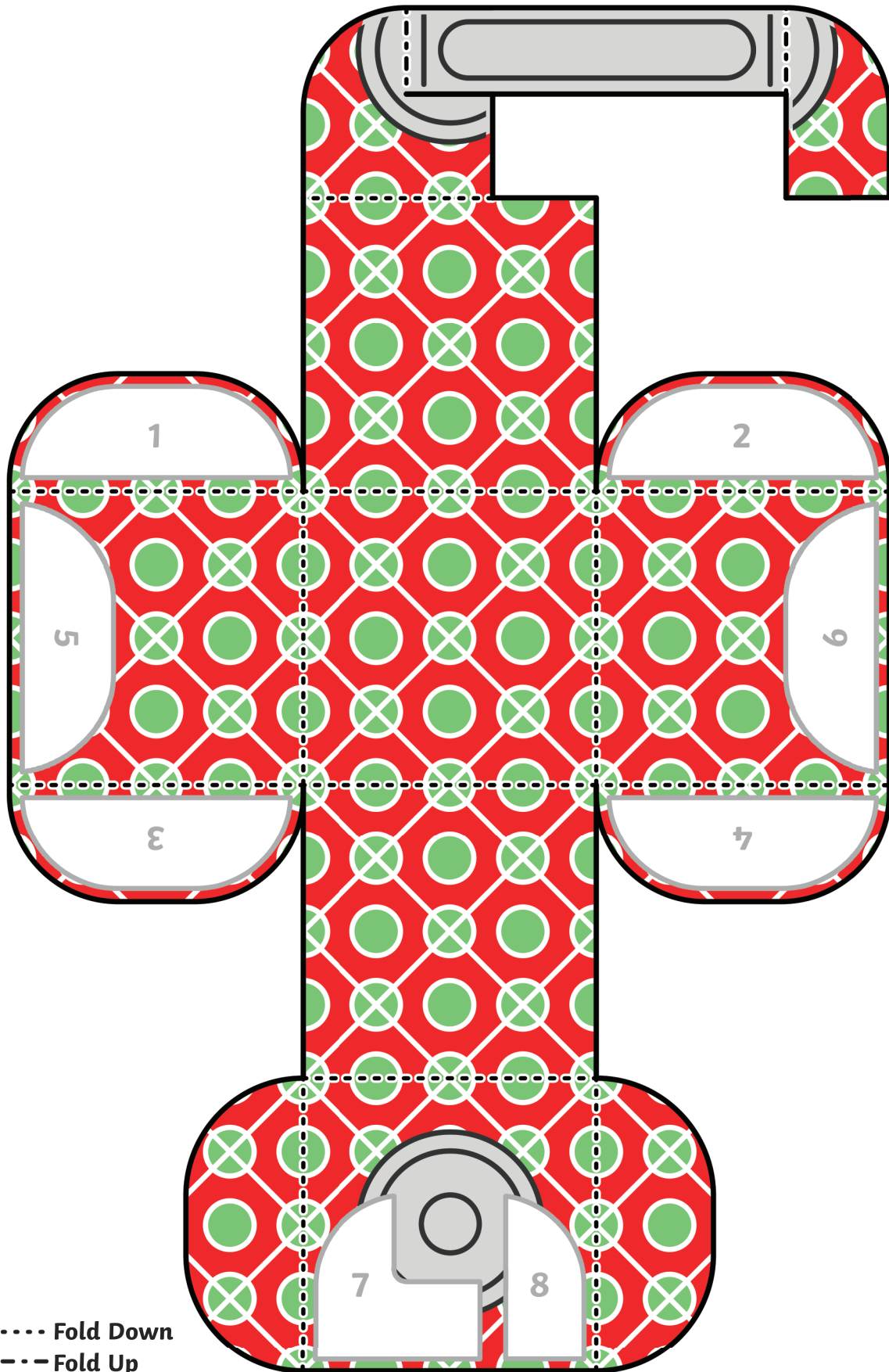
5. Finally, glue the handle into place; add glue to shape 7 and fold the tab down on top of it.

6. Curve the other side of the handle over, then glue it on top of shape 8 to finish the handle.

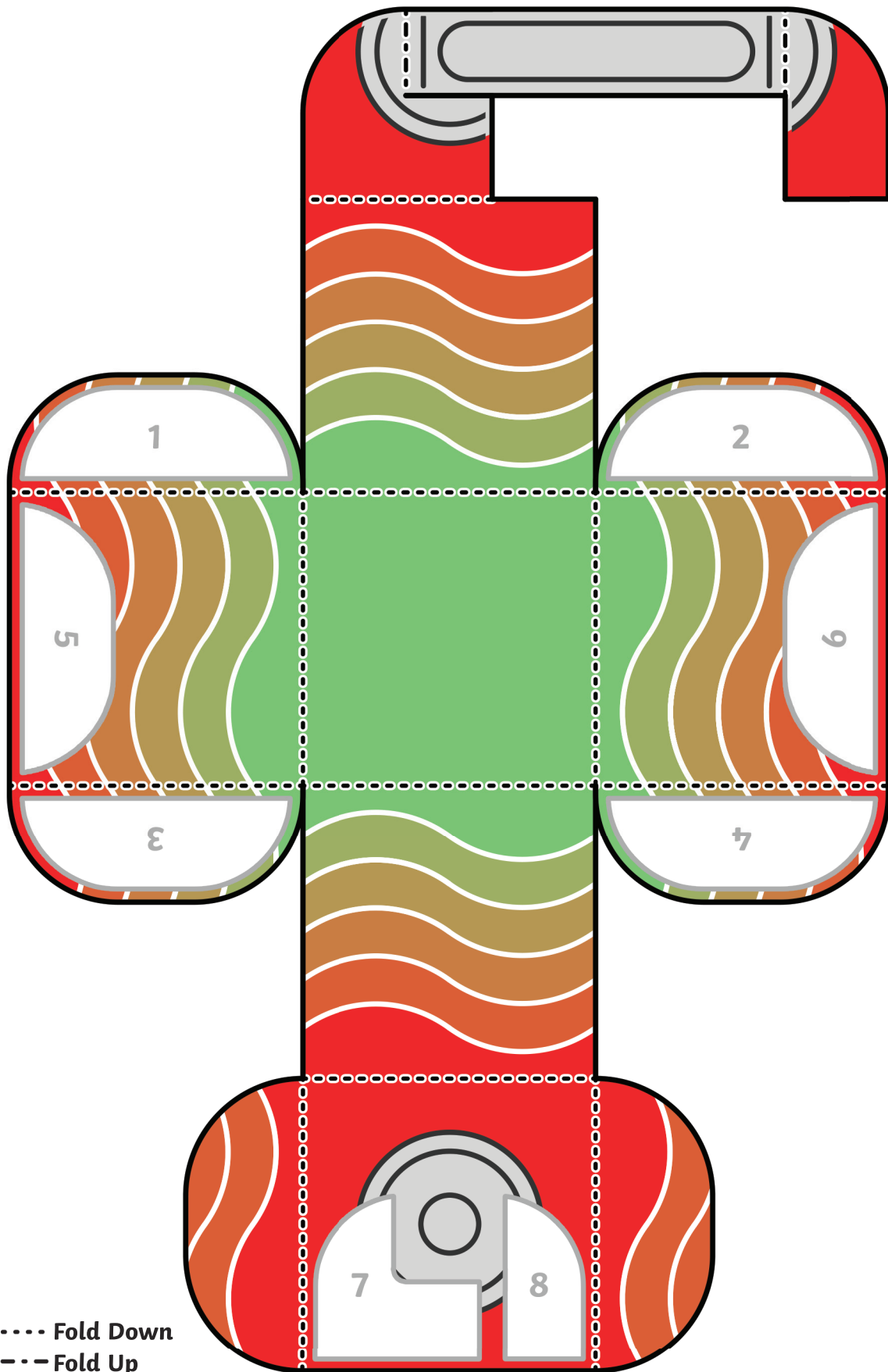
You have finished your Christmas box bauble!

Why not make another bauble in a different design?

Christmas Box Baubles

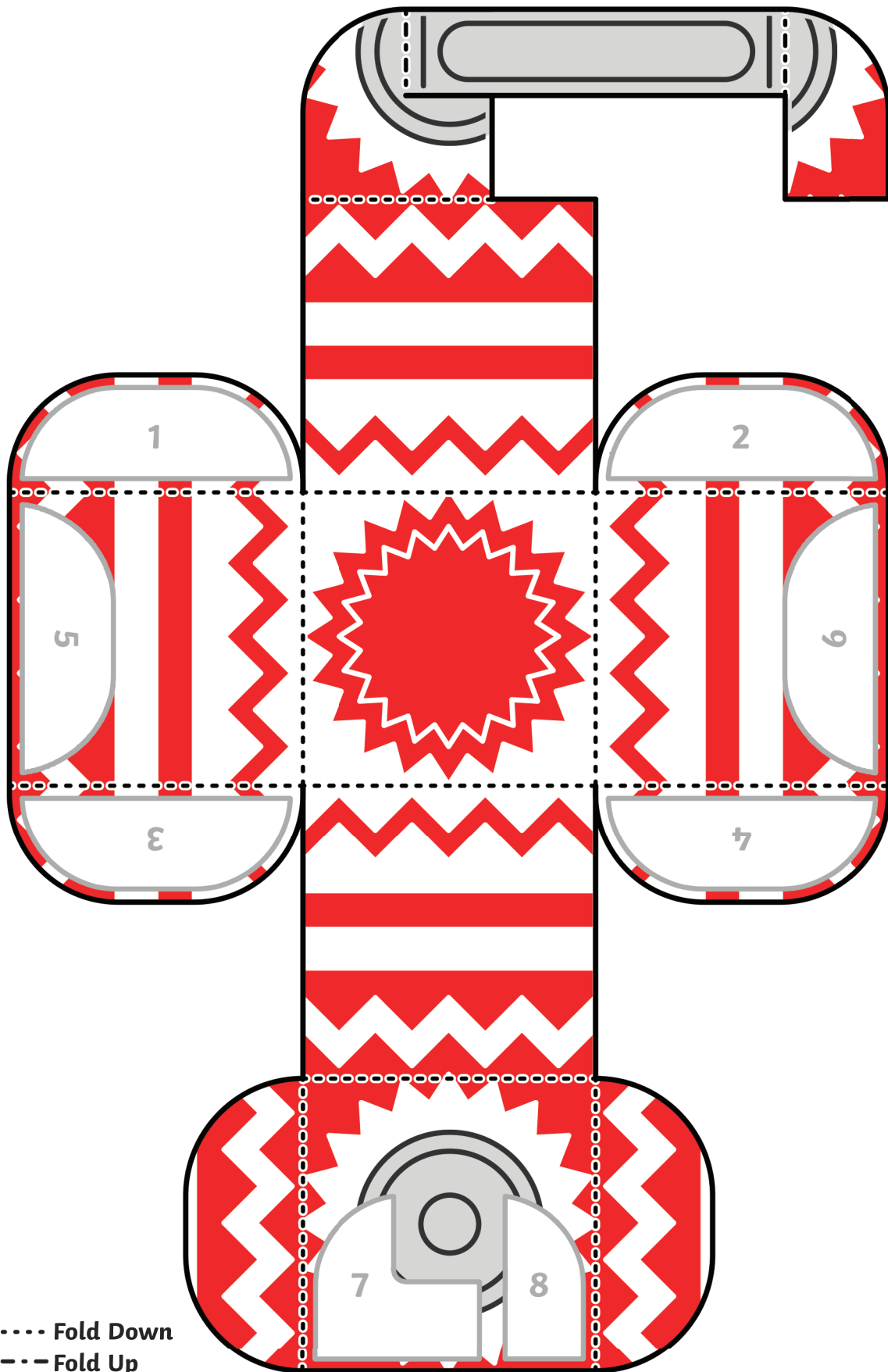


Christmas Box Baubles

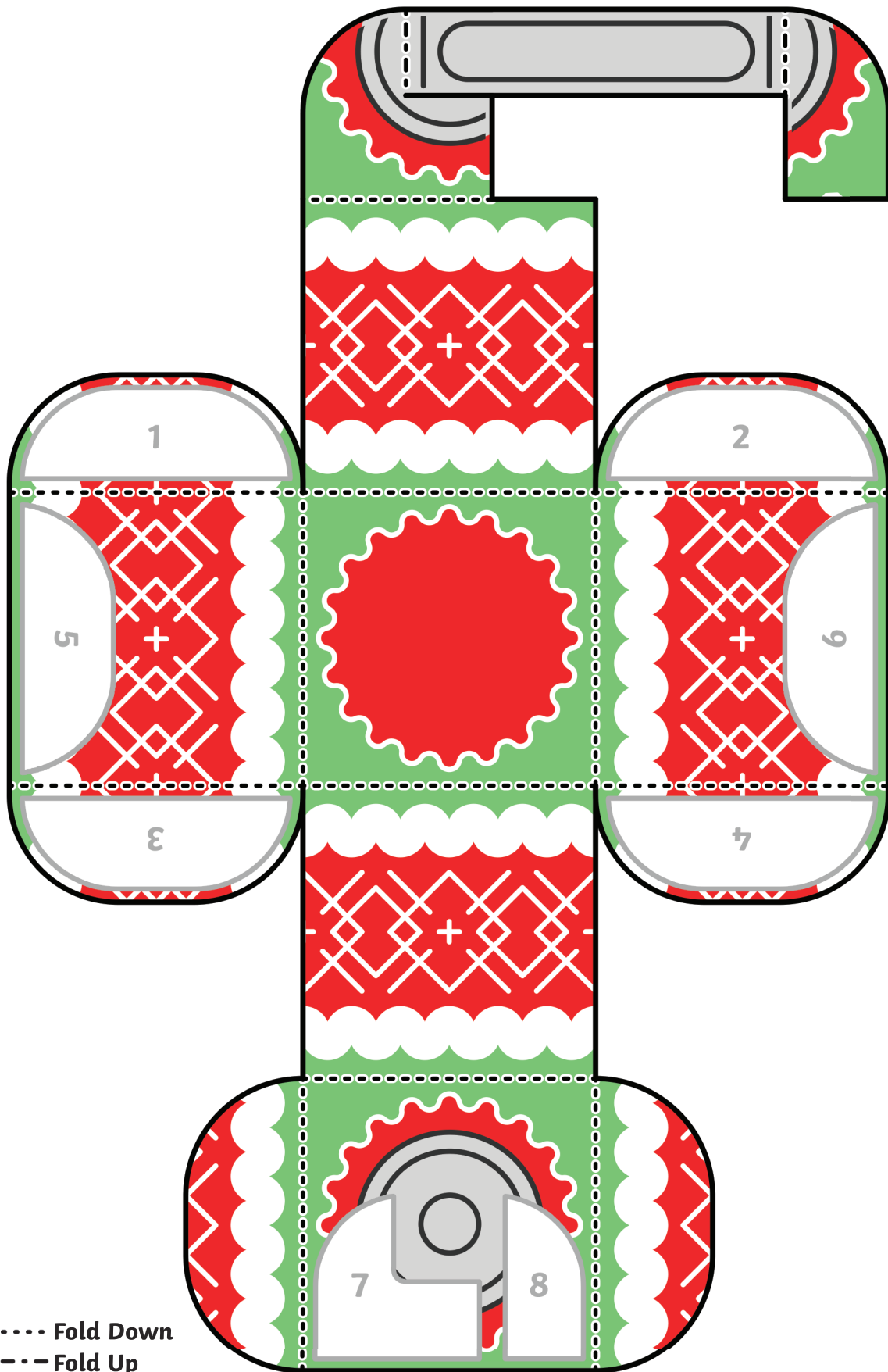


..... Fold Down
- - - - - Fold Up

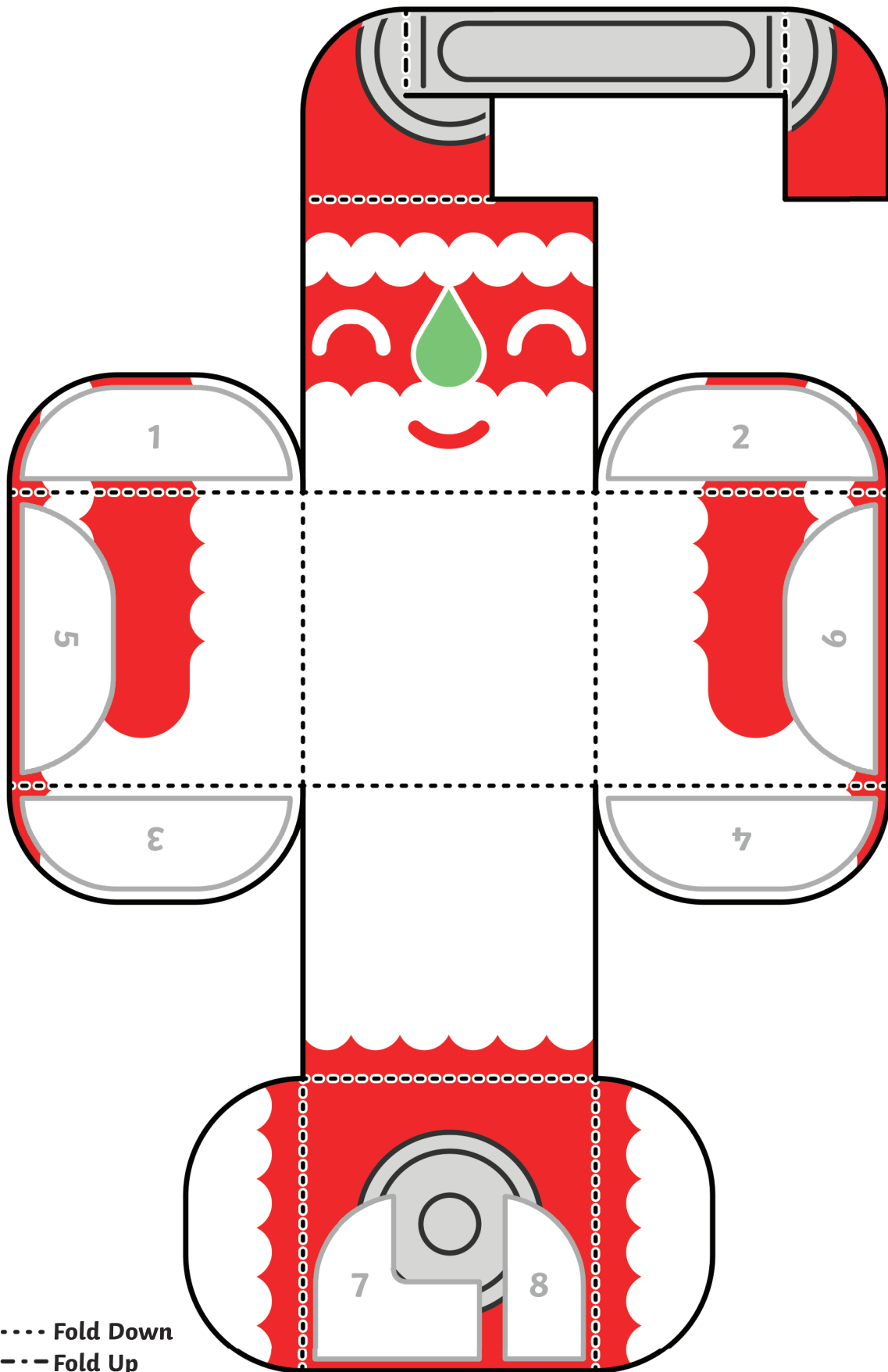
Christmas Box Baubles



Christmas Box Baubles



Christmas Box Baubles



Christmas Box Baubles

